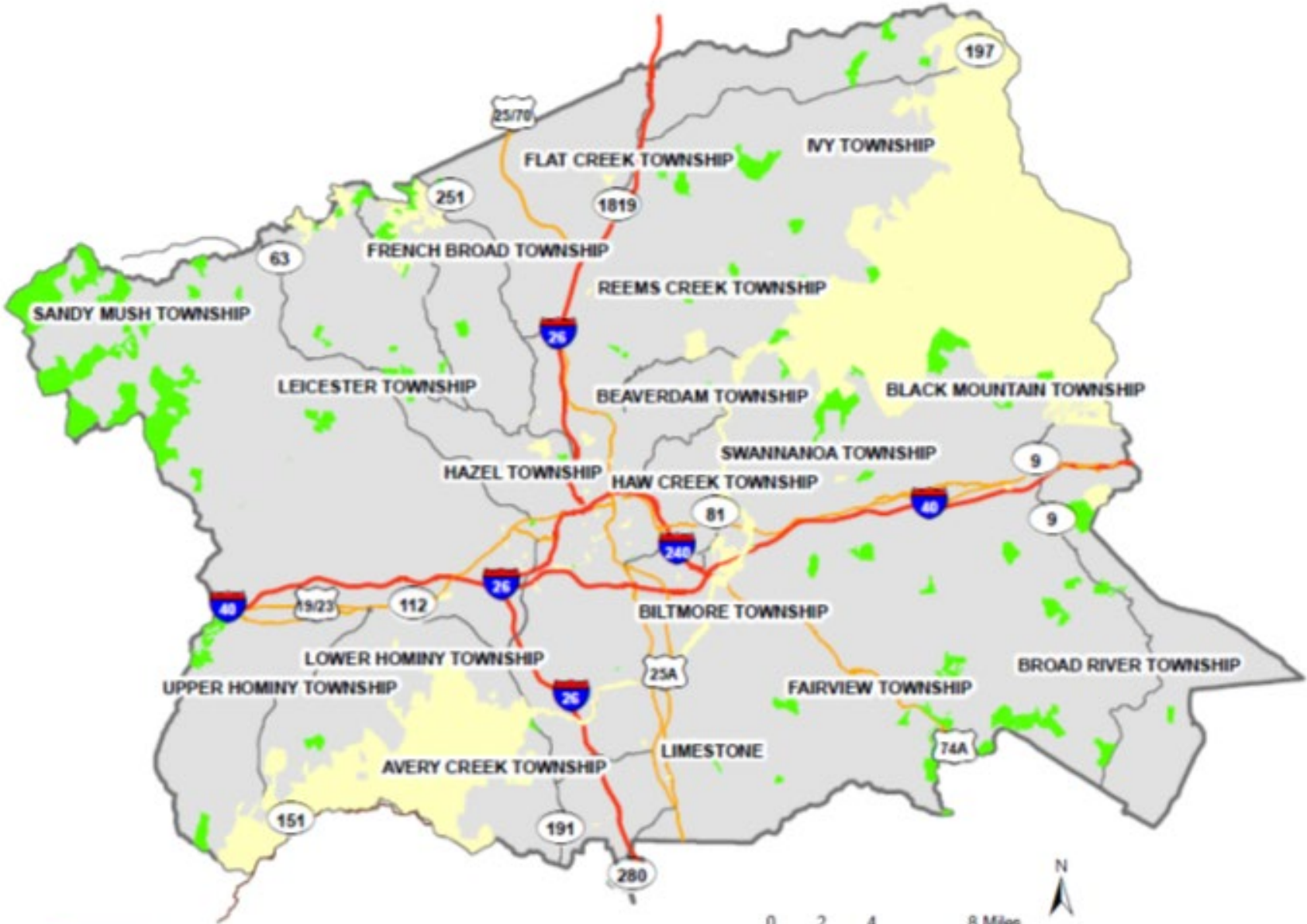
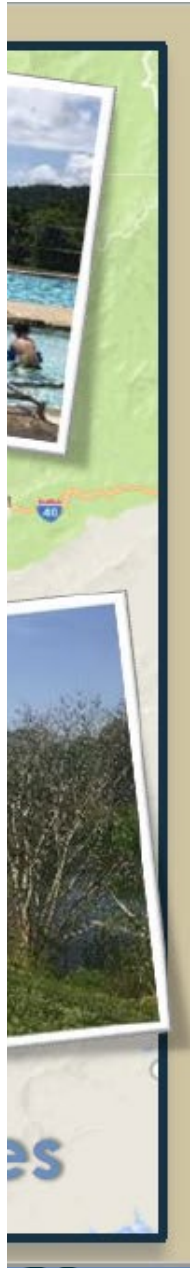


7 ball
7
12 soc
8
6 recre
1
5 pool



Conserved Public Lands Conserved Private Lands



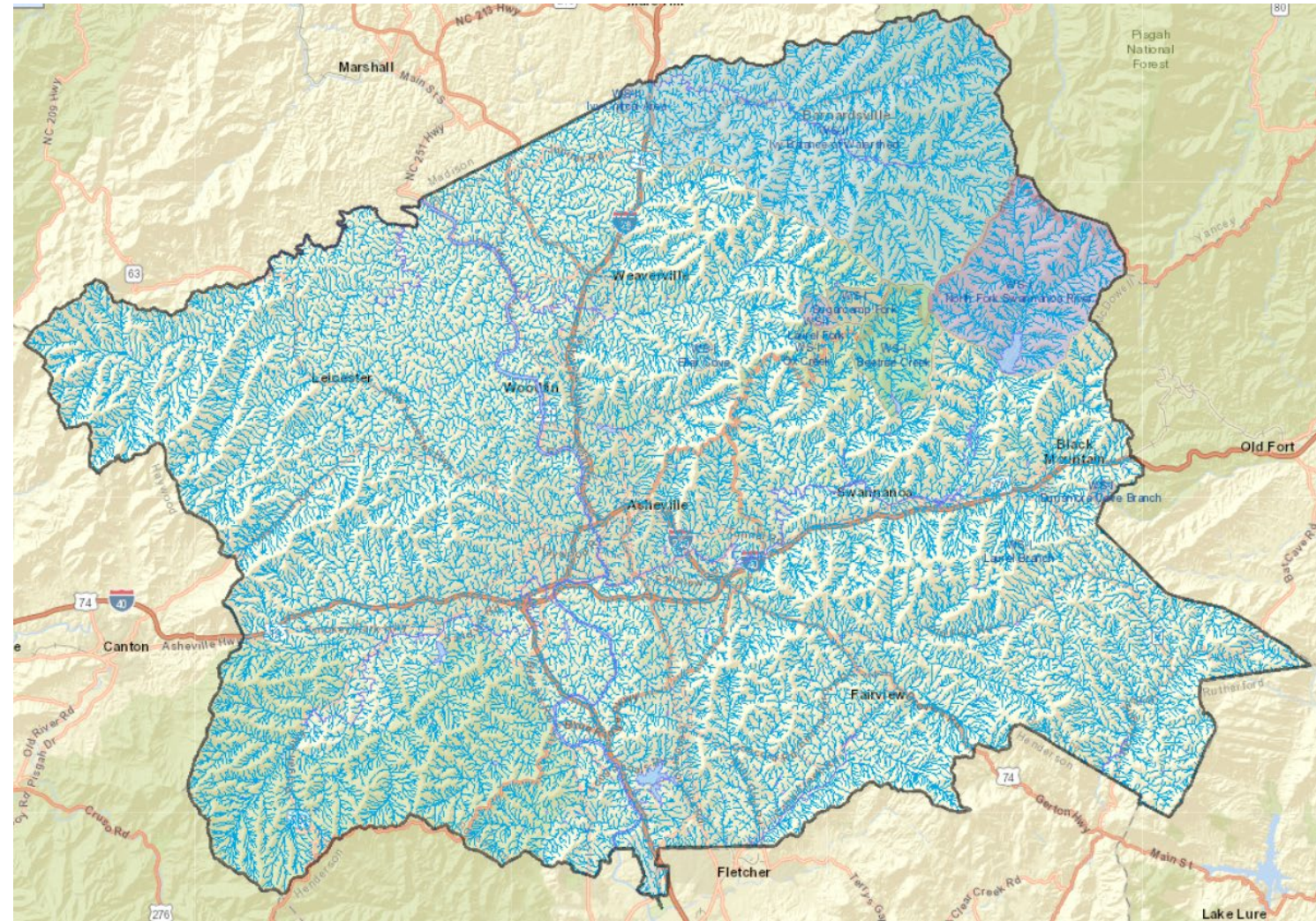
Open Space and Conserved Lands

- Hiring a Farmland Preservation Program Coordinator
- Bringing LCAB (Land Conservation Advisory Board) into Ag and Land Resources
- Working with a U Penn grad student to identify high priority regions to target for conservation easements
 - Consecutive tracts of land – close to other easements
 - High quality/prime agricultural soils
 - Working with GIS and Land Management to map
- Comp Plan is working to address Open Space and Land Use



Water Quality

- Buncombe County Soil and Water Conservation District Programs
 - Cost Share Assistance on Ag Lands
 - EWP Disaster Response
 - CCAP – Urban Water Quality
 - Other Water Quality Grant Sources
- Working with EQI on Water Quality Monitoring
 - FY22 Contract to monitor 16 sites
 - Environmental Education Program is engaging students in the monitoring

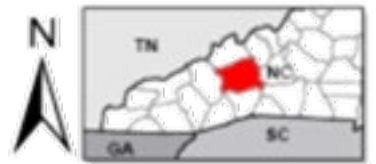
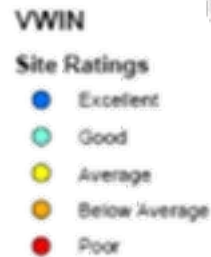
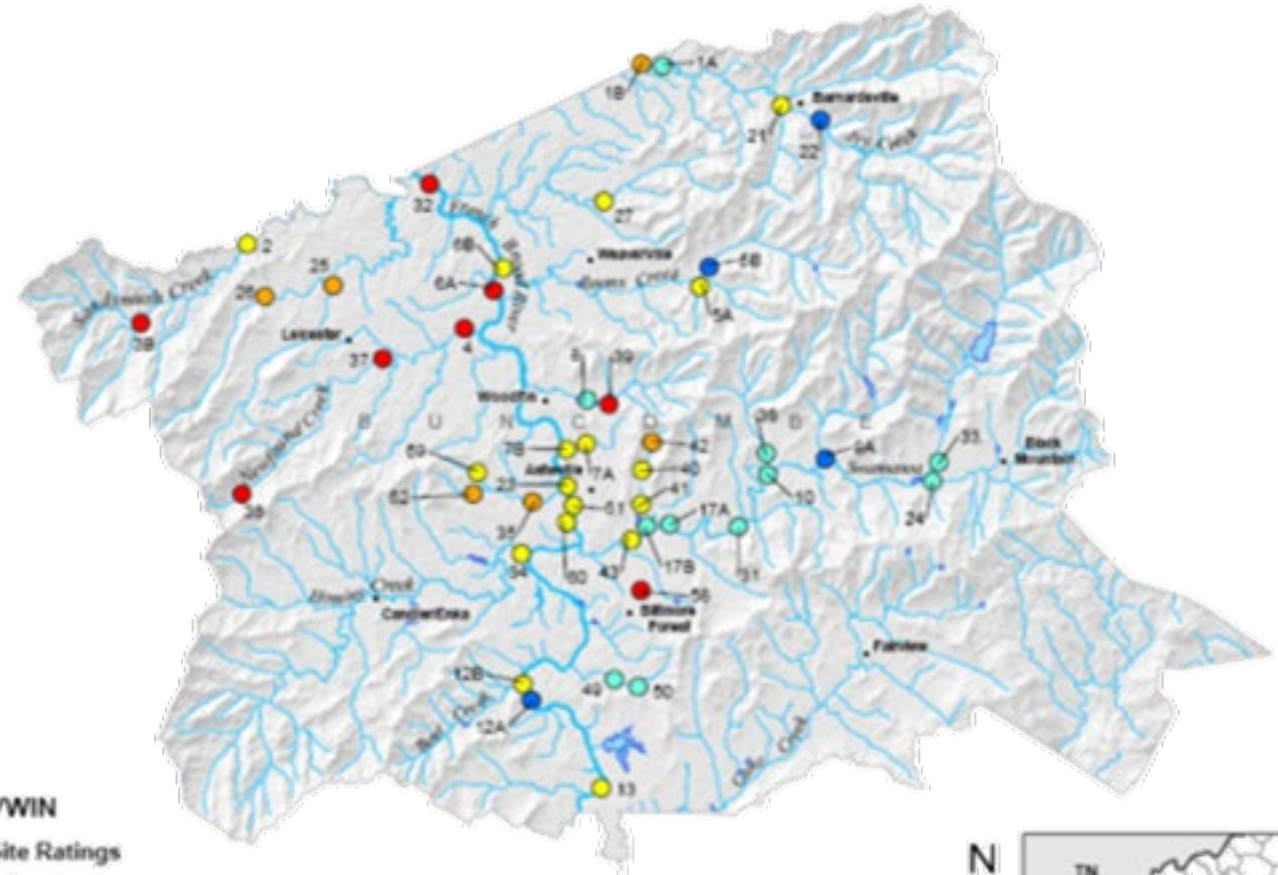


Water Quality

Buncombe County VWIN Map 2017-19

Environmental Quality Institute

- Big Ivy at Forks of Ivy
- Little Ivy at Forks of Ivy
- Sandymush Creek at Leicester Hwy
- Lower Newfound Creek
- Ox Creek at Reems Creek
- Reems Creek at Ox Creek
- Cane Creek at Hwy 74
- Ashworth Creek at Cane Creek
- Ivy Creek at Buckner Branch Road
- Paint Fork at Ivy Creek confluence in Barnardsville
- Ivy Creek at Dillingham Road
- South Turkey Creek
- North Turkey Creek at North Turkey Creek Rd
- Newfound Creek at Dark Cove Road
- Newfound Creek at Leicester Hwy
- Nesbitt Discovery Academy stream



Source: The Environmental Quality Institute, 1995
Author: Stephen Pava-CH2M Hill

